

# THE ENCLAVE AT WOODFIELD COUNTRY CLUB

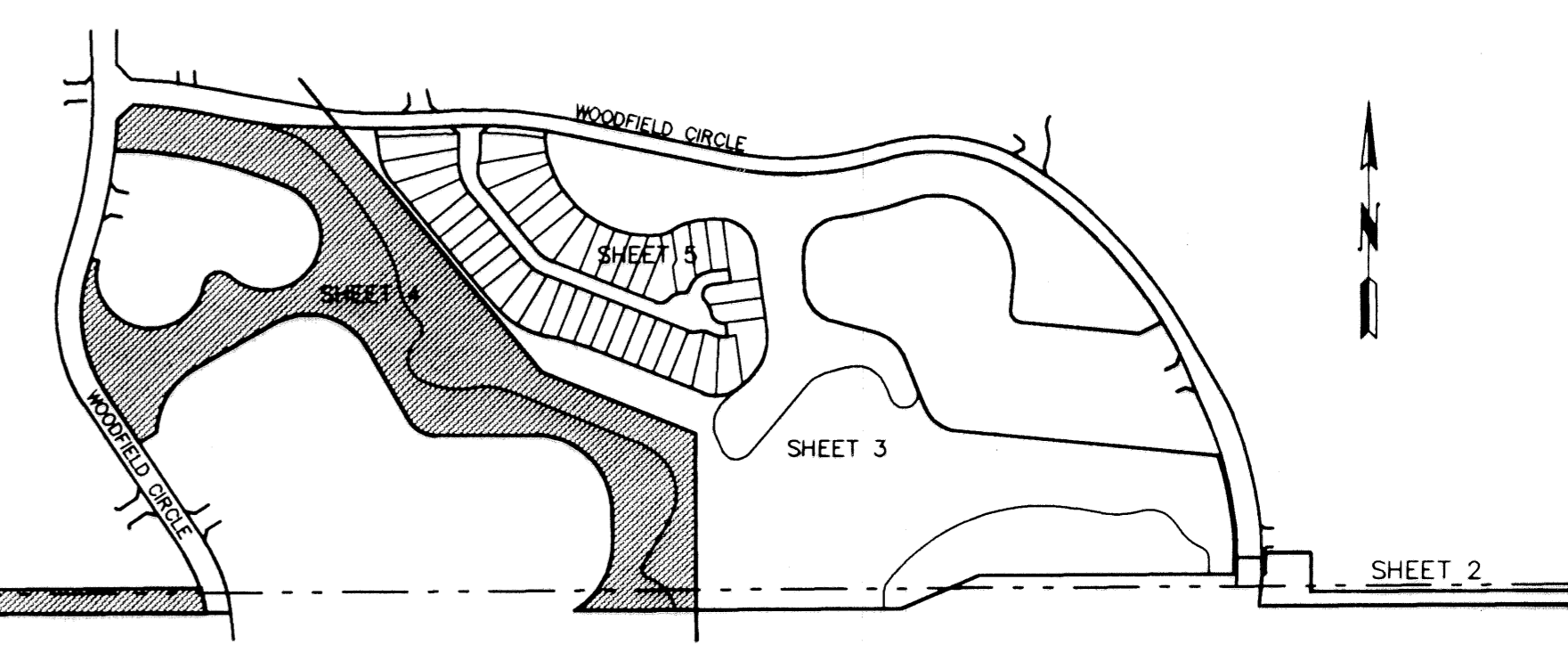
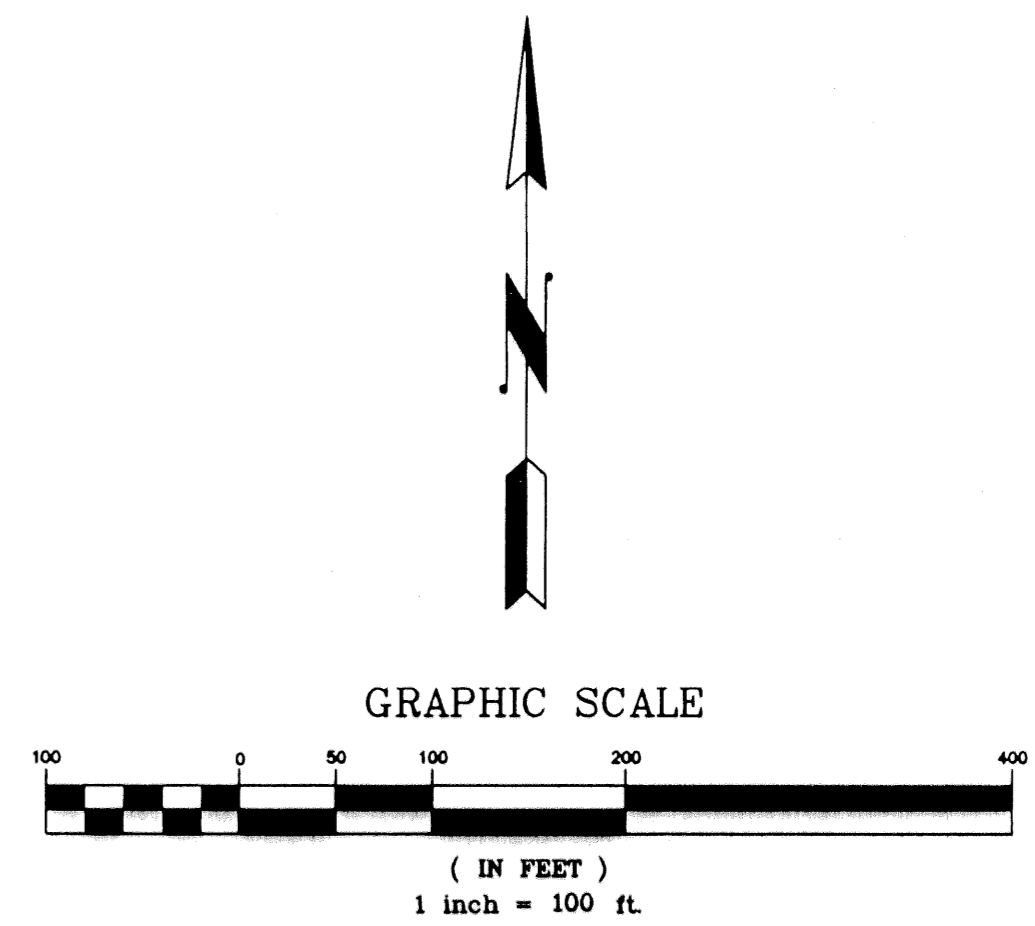
IN PART OF SECTION 4, TOWNSHIP 47 SOUTH, RANGE 42 EAST  
CITY OF BOCA RATON, PALM BEACH COUNTY, FLORIDA

SHEET NO. 4 OF 5

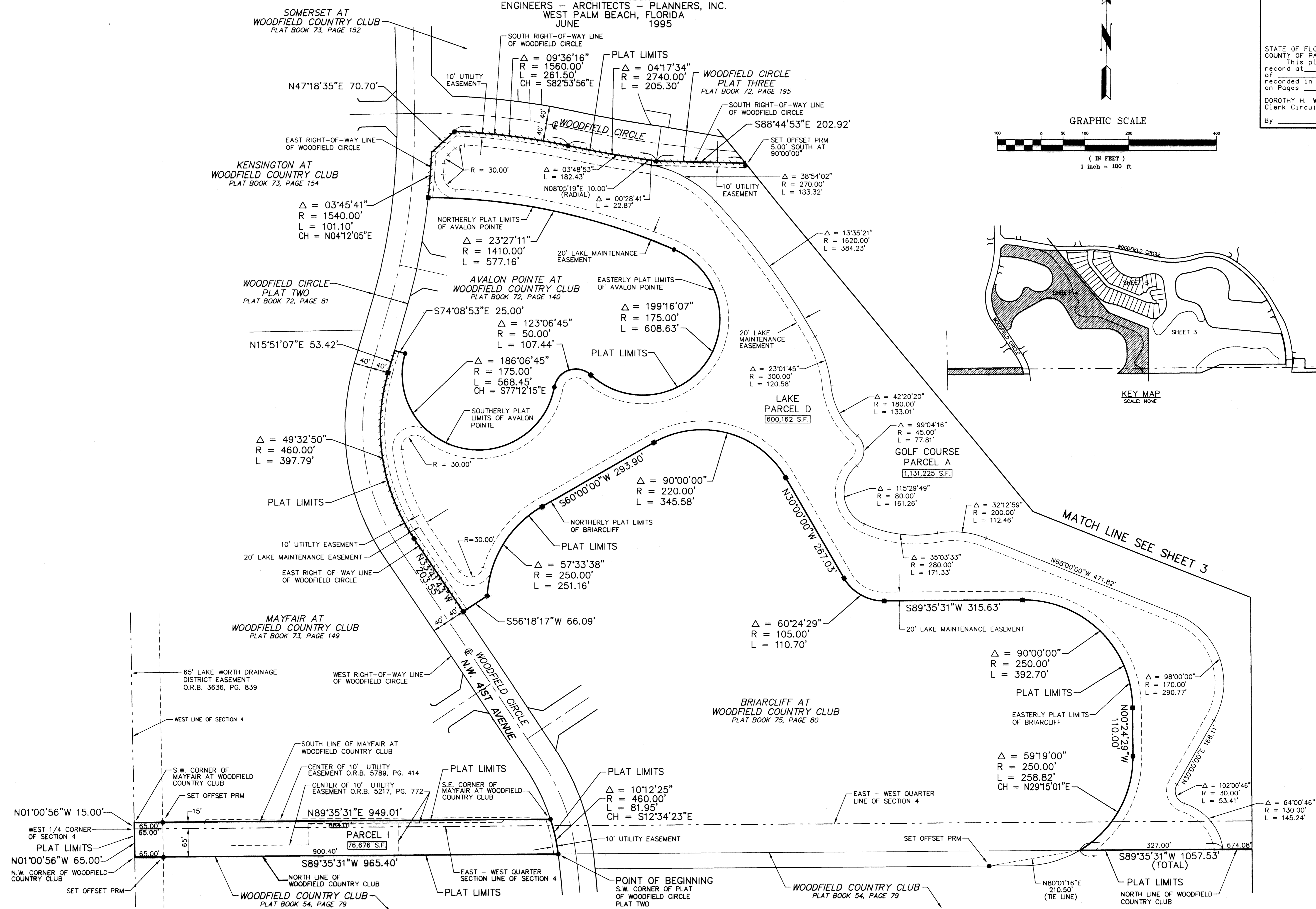
GEE & JENSON  
ENGINEERS - ARCHITECTS - PLANNERS, INC.  
WEST PALM BEACH, FLORIDA  
JUNE 1995

66

STATE OF FLORIDA  
COUNTY OF PALM BEACH  
This plat was filed for  
record at \_\_\_\_\_ this \_\_\_\_\_ day  
of \_\_\_\_\_ 1995, and duly  
recorded in Plat Book No. \_\_\_\_\_  
on Pages \_\_\_\_\_ thru \_\_\_\_\_  
DOROTHY H. WILKEN  
Clerk Circuit Court  
By \_\_\_\_\_ D. C.



KEY MAP  
SCALE: NONE



COMPUTED BY \_\_\_\_\_  
DRAWN BY D. BACHOR  
CHECKED BY \_\_\_\_\_  
APPROVED BY \_\_\_\_\_  
JOB NO. 93-330.6

SUBDIVISION # Woodfield Country Club  
 BOOK 74 PAGE 66  
 FLOOD MAP # \_\_\_\_\_  
 ZONING \_\_\_\_\_  
 QUAD # \_\_\_\_\_  
 SE \_\_\_\_\_  
 PUD NAME City of Boca Raton